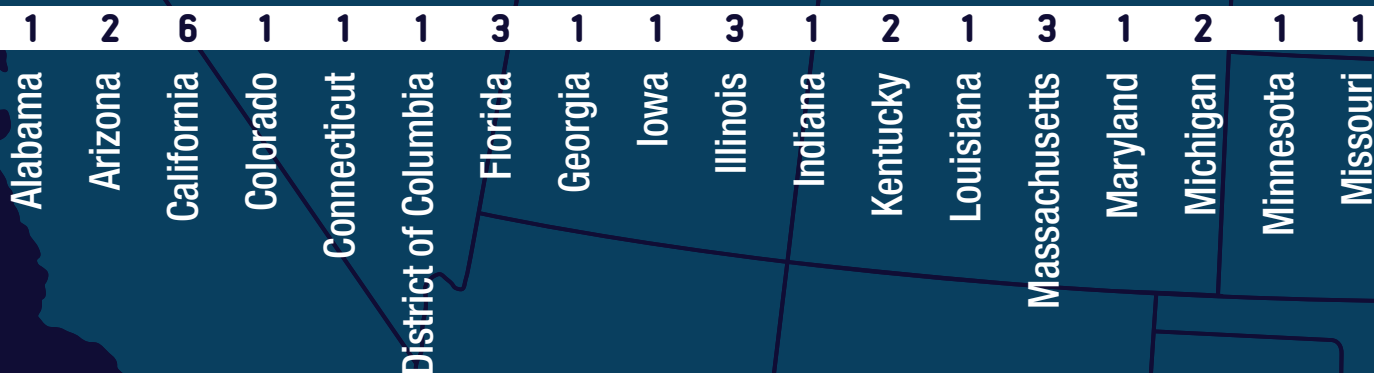


it's all about statistics

A statistical look at the state of dentistry

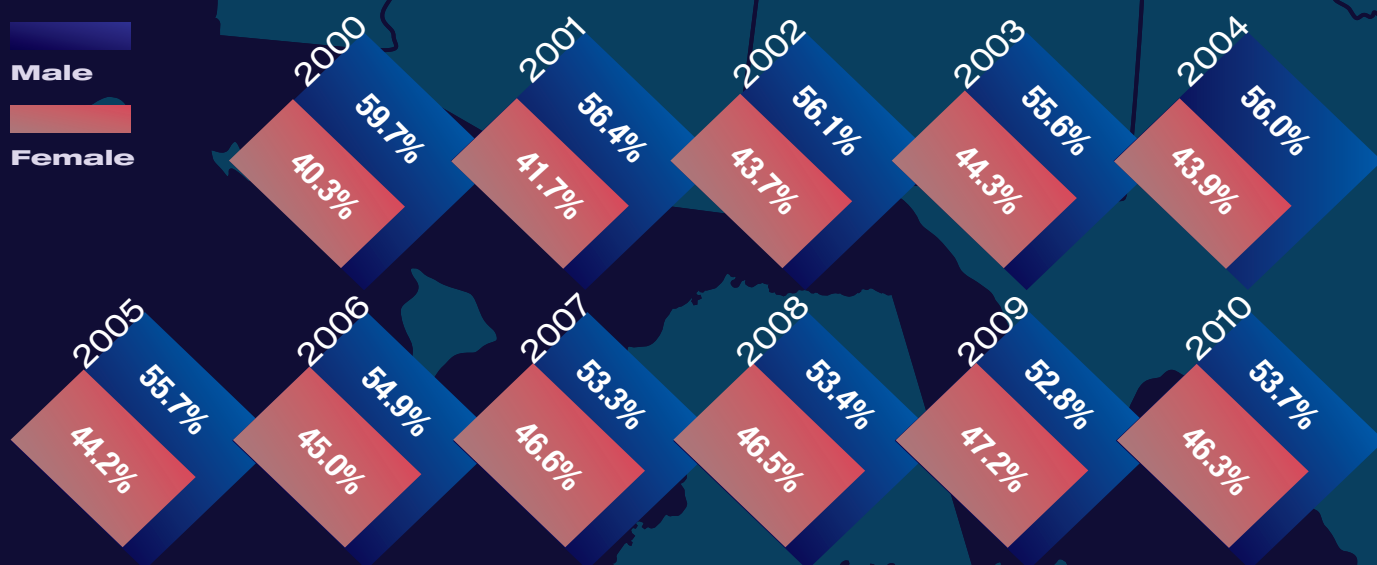
EDUCATION

Current Number of Dental Schools by State



Male vs. Female Dental School Applicants

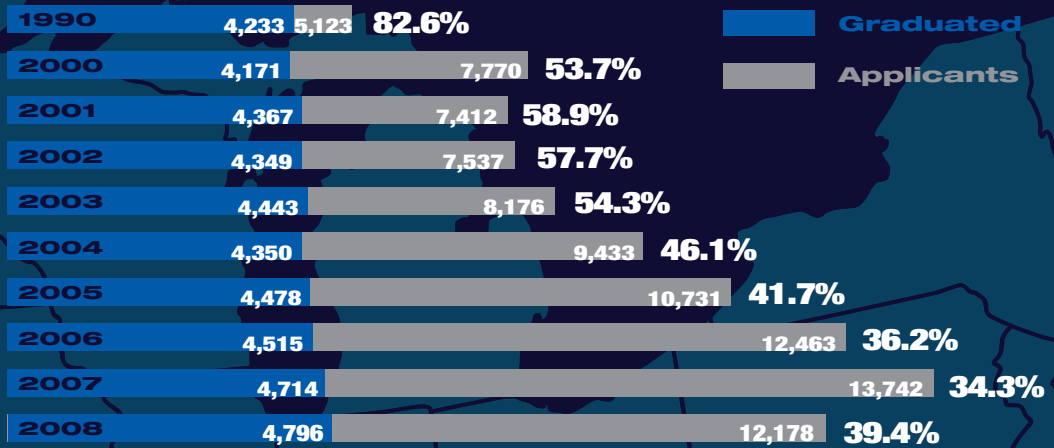
Male
Female



Source: American Dental Education Association, U.S. Dental School Applicants and Enrollees, 2009 and 2010 Entering Classes
<http://www.adea.org/publications/tde/Documents/Applicants%20by%20Gender,%202000%20to%202009.pdf>

Percentage of Dental School Graduates vs. Applicants

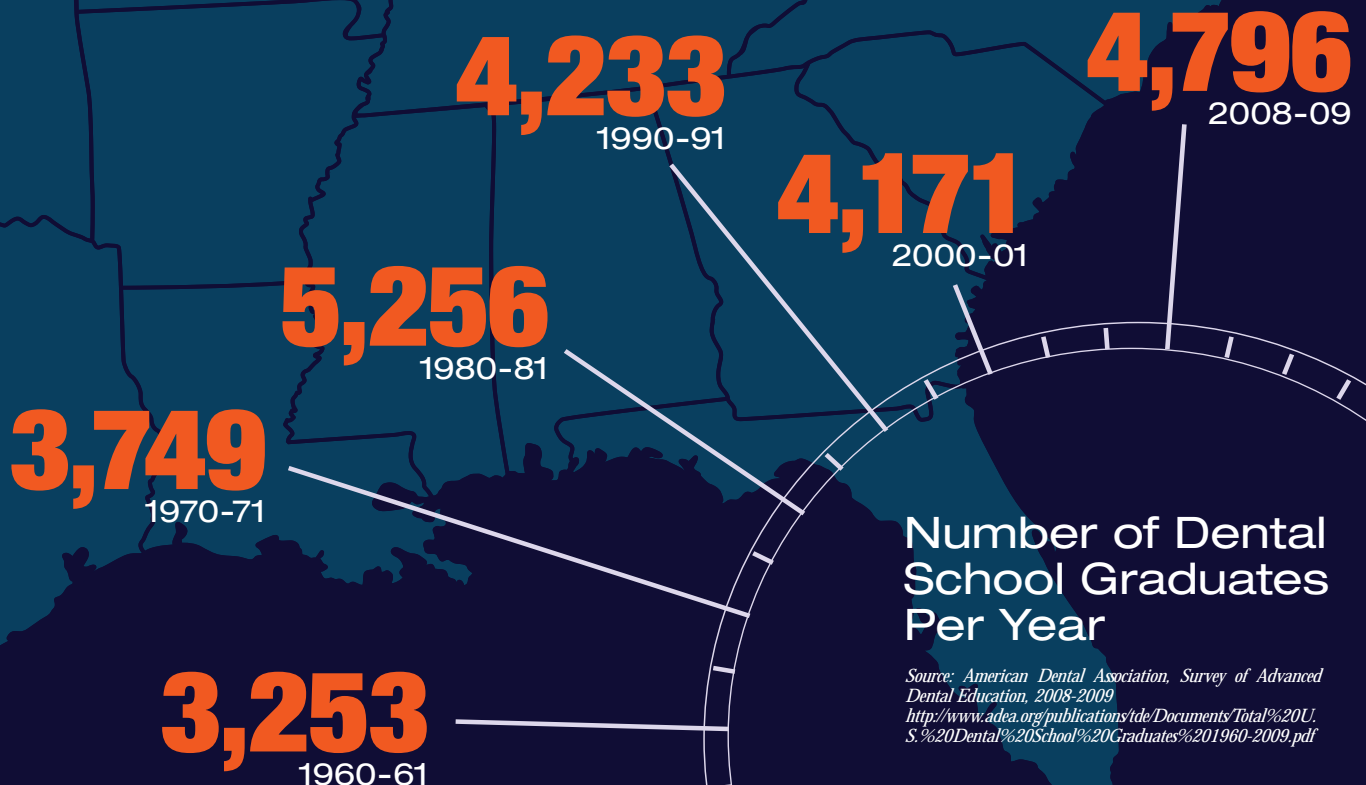
<http://www.adea.org/publications/tde/Documents/Sae%20AI%20Predoctoral%20Dental%20Applicants%20and%20Enrollees%20Graphs%20at%20U.S.%20Dental%20School%20Graduates%201960-2009.pdf>



<http://www.adea.org/publications/tde/Documents/2010%20Dental%20Schools%20list.pdf>

1 2 2 1 1 4 2 1 1 3 1 2 3 1 1 1 1 1

Mississippi North Carolina Nebraska New Jersey Nevada New York Ohio Oklahoma Oregon Pennsylvania South Carolina Tennessee Texas Utah Virginia Washington Wisconsin West Virginia



continued on page 108

DENTISTS

Total Number of General Dentists in U.S.

Source: ADA Distribution of Dentists publications - ADA Health Policy Resources Center
*Provided by ADA Department of Membership, Marketing and Tripartite Relations

116,372
1993

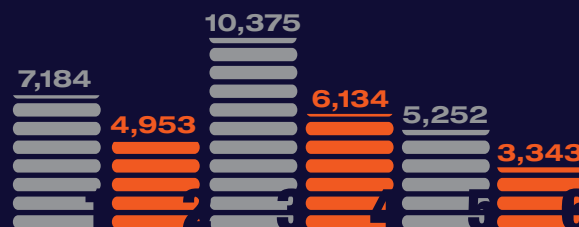
132,835
2000

146,675
2009

150,043*
2010

81.1%
of independent dentists are in solo practice

Source: ADA; 2009 Survey of Dental Practice "Characteristics of dentists"



Total Number of Specialists in the United States

1. Oral and Maxillofacial Surgeons
2. Endodontists
3. Orthodontists & Dentofacial Orthopedics
4. Pedodontists
5. Periodontists
6. Prosthodontists

Source: American Dental Association, Survey Center, 2009 Distribution of Dentists in the United States by Region and State

Dentists to Population Ratio by State

Alabama	Alaska	Arizona	Arkansas	California	Colorado	Connecticut
1:3,064	1:1,683	1:2,422	1:2,982	1:1,569	1:1,955	1:1,774
Indiana	Iowa	Kansas	Kentucky	Louisiana	Maine	Maryland
1:2,674	1:2,404	1:2,411	1:2,259	1:2,690	1:2,545	1:1,809

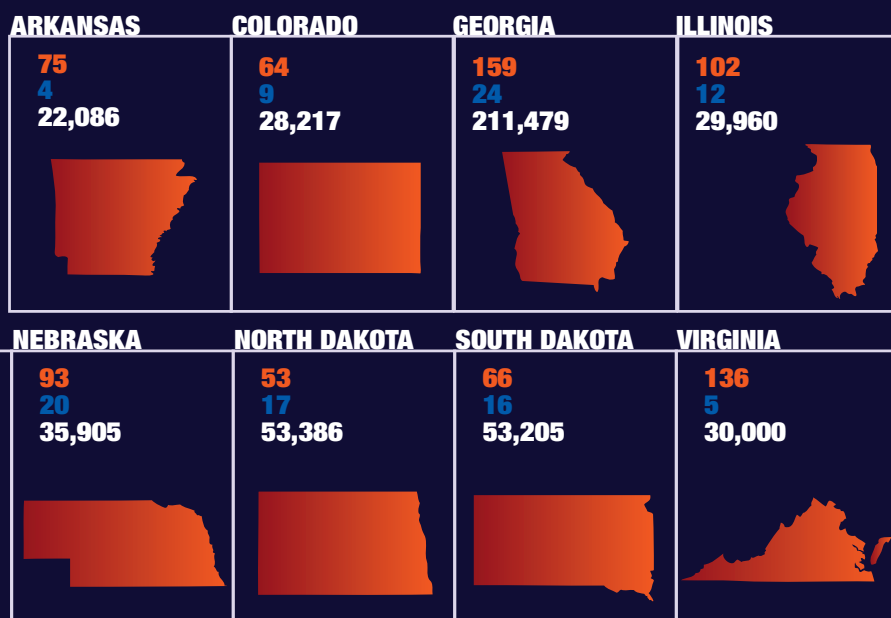
Sources: American Dental Association, Survey Center, 2009 Distribution of Dentists in the United States by Region and State.
<http://www.census.gov/schools/facts/>

2009 Data for States with More Than 20,000 People Without a Dentist

Total # of counties

Total # of counties without a dentist

Total of county population without a dentist



* Data for Alaska, California, Florida, Indiana, Minnesota, New Jersey, New Mexico, Utah, Vermont and Wyoming not provided. <http://apps.nccd.cdc.gov/synopses/ProgramDataV.asp?ProgramID=20>

According to the ADA Department of Membership, Marketing and Tripartite Relations, in 2010, of the total active licensed dentists (all specialties) in the United States...

187,898

Source: ADA Department of Membership, Marketing and Tripartite Relations, 2010

60.2% are **Caucasian**
Approximately

9.2% are **Asian**
Approximately

4.0% are **Hispanic**
Approximately

3.5% are **African American**
Approximately

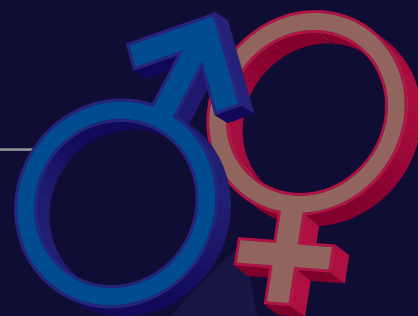
0.3% are **American Indian**
Less than

1998 Male: 140,000
Female: 23,513

2006 Male: 140,000
Female: 35,444

2009 Male: 144,775
Female: 41,309

Source: ADA; 2009 Survey of Dental Practice "Characteristics of dentists"



Male vs. Female Professionally-active General Dentists

Delaware	District of Columbia	Florida	Georgia	Hawaii	Idaho	Illinois
1:2,792	1:1,183	1:2,452	1:2,912	1:1,520	1:2,023	1:1,893
Massachusetts	Michigan	Minnesota	Mississippi	Missouri	Montana	Nebraska
1:1,666	1:1,991	1:2,036	1:3,098	1:2,623	1:2,023	1:2,065
Nevada	New Hampshire	New Jersey	New Mexico	New York	North Carolina	North Dakota
1:2,441	1:2,113	1:1,587	1:2,731	1:1,645	1:2,789	1:2,302
Ohio	Oklahoma	Oregon				
1:2,382	1:2,485	1:1,812				
Pennsylvania	Rhode Island	South Carolina				
1:2,067	1:2,405	1:2,790				
South Dakota	Tennessee	Texas	Utah			
1:2,362	1:2,616	1:2,770	1:1,919			
Vermont	Virginia	Washington				
1:2,245	1:2,120	1:1,805				
West Virginia	Wisconsin	Wyoming				
1:2,596	1:2,140	1:2,258				

Dental Health Professional Shortage Areas [HPSAs]

As of April 5, 2011 http://erss.hrsa.gov/ReportServer?/HGDW_Reports/BCD_HPSA/BCD_HPSA_SCR50_Smry&rs:Format=HTML3.2

33,444,731

Estimated Underserved Population

51,475,776

Population of Designated HPSAs

9,968

Practitioners Needed to
Achieve Target Ratios

continued on page 110

DENTALTOWN

Dentaltown Magazine Print and/or Digital Edition
is Mailed to

128 Countries*

**and there are members of Dentaltown.com
from 190 countries*

Source: Publisher's data

Dentaltown.com Weekly Activity

16.49%
of weekly activity
occurs on **Monday**

16.08%
of weekly activity
occurs on **Thursday**

17.55%
of weekly activity
occurs on **Tuesday**

16.97%
of weekly activity
occurs on **Wednesday**

12.24%
of weekly activity
occurs on **Friday**

10.20%
of weekly activity occurs
on **Saturday**

10.48%
of weekly activity
occurs on **Sunday**

Source: Publisher's data

2,516
Posts in
a Day

4/21/08
Active Date

Dentaltown.com*As of August 24, 2011*Total number of registered users on Dentaltown.com: **140,455**Total number of message board posts: **2,706,182**Total number of message board topics: **161,391**Total number of message board views: **36,814,654**Total number of Dentaltown.com CE course views: **367,034**

If you took all

154

continuing education courses listed on Dentaltown.com you could earn

312

ADA CERP Credits

*Source: Publisher's data***265.5**

AGD PACE Credits

Tuesday

Active Day of the Week

263

Registrations in a Day

themoost*Source: Publisher's data***12:00-12:59 p.m.**

Active Hour

169

CE Courses Completed in a Day

the average*Source: Publisher's data***31,410**

Weekday Visits

0:17:04

Length of Visit

16,800

Weekend Visits